

Translated into English by www.westfaliaLT.info – a useful website for VW Westfalia LT Camper enthusiasts.

www.westfaliaLT.info - a useful site for enthusiasts and owners of VW Westfalia LT campers

Furniture

All visible parts of the furniture are plastic coated and can easily be cleaned with a damp cloth. Doors, flaps and drawers are fitted with safety handles so they don't open whilst driving. To open pull the handle.

Carpet

The carpet is fully synthetic and should be cleaned using commercially made shampoo.

Upholstery, Curtain

The cushions are composed of polyether foam. The upholstery and curtains should be chemically cleaned, if necessary.

Windows

All double glazed windows in the living area are made from acrylic plastic. The windows should be washed with plenty of water with added soap or detergent. A 10% addition of detergent will prevent the build up of static electricity and hence dust.

You should only use very soft cloth or natural chamois to rub the plastic windows. Light scratches can be polished with brass polish. A subsequent treatment with silver polish is recommended.

One window can be opened in several fixed positions. To close the window, open it wide and then close properly. When driving the window must stay closed

For winter the rubber seals for the opening windows and doors, should occasionally be rubbed with talcum powder.

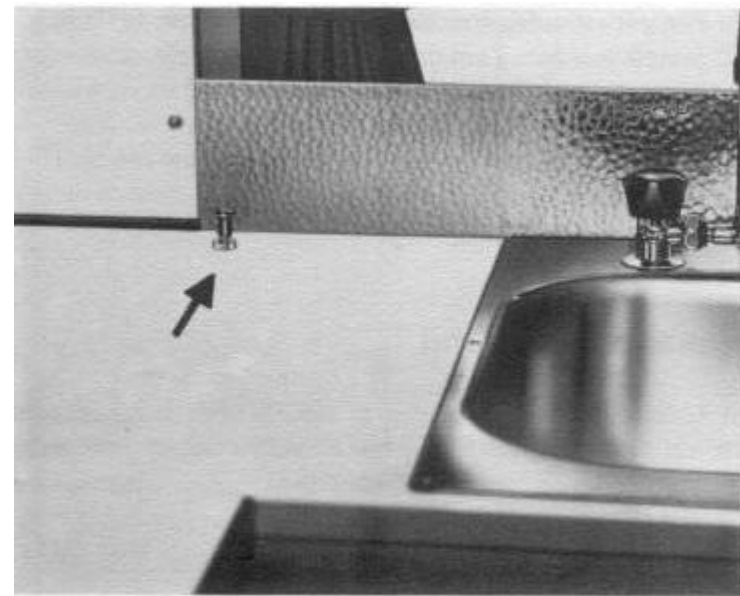
Water Supply

In the kitchen cupboard there is a 70 litre (approx) freshwater tank. The lockable filler cap is located outside next to the right rear side window. Before running the water for the first time the electric pump is switched

on by briefly pulling the black switch next to the sink. When the water is switched on, the pump that also provides the necessary pressure, switches itself on automatically.

The water pump must be switched off when you leave the vehicle and (pull switch) when the tank is empty. If switched on with no water in the system the pump will run dry.

At high temperatures and low water levels residues may form in the fresh water tank and lines. It is therefore advisable to change the water more frequently or to add commercial chemicals for filtration and sterilisation. When vehicle is not being used for longer periods and in winter the entire water system should be emptied.



Switch for water pump.

The drain valve for the freshwater tank is located under the vehicle body behind the right hand side rear wheel arch. The freshwater system and water heating system can be emptied using the drain taps situated under the unit. For this the pump should be off, the taps in the kitchen and shower should be open and the shower hose should be placed on the shower floor. Furthermore to complete the emptying undo the red wing nut on the regulator housing of the water heater completely.

The waste water is collected in an under floor tank which also handles about 70 litres. The water is emptied by opening the drain tap.

When you drain the water system observe any environmental laws. On the campsite observe the rules and regulations.

To prevent freezing of waste water in waste water tank then a sufficient quantity of salt should be added and also ensure timely emptying.

Should the water in the tank freeze, the tank will not be damaged.

Gas Supply

The two 5kg gas bottles are accessed by opening the rear side vehicle door and removing the sheet metal cover. The fridge, cooker, heater and water heater are connected to the gas supply.

The correct installation of the gas system is confirmed by the enclosed inspection certificate.

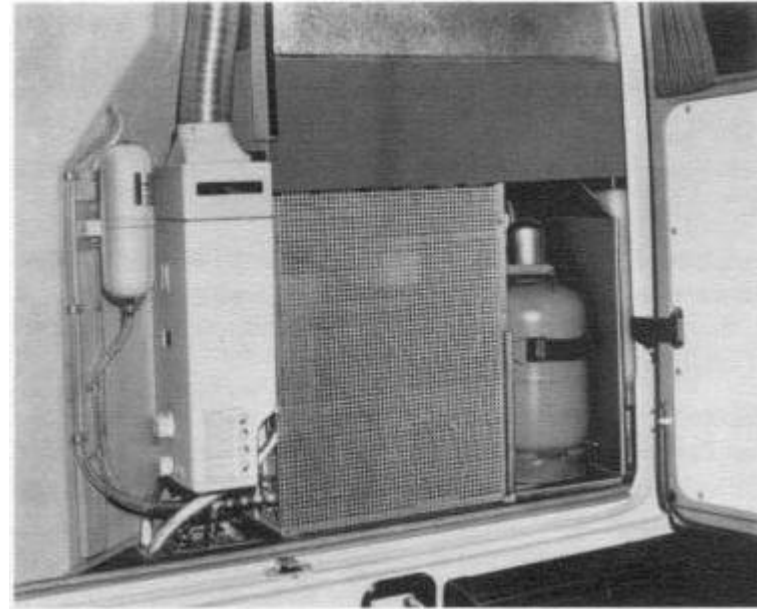
Every two years the gas system needs to be checked by an authorised specialist and a new certificate will be issued.

The certificate needs to be presented with the vehicle when it is being submitted for the TUV test.

Water Heater

The water heater is powered by gas and turns on automatically when then the hot water tap in the kitchen or shower is switched on.

The heater is accessed by opening the vehicles rear doors.




View with the rear doors open.


Gas water heater on the left and gas bottles on the right.

Bringing into service

- a) Open the quick release valve in the kitchen cupboard.
- b) Turn the central control knob from the closed position ● out in an anti clockwise direction.
Turn as far as it will go until the pilot flame lights and hold for about 10 seconds.
- c) If the flame does not light hold the control switch for some time in order to allow any air in the pilot light gas supply to escape.
Then repeat the ignition procedure described in b).

- d) Upon releasing the central switch it remains in position L and the flame is burning.
- e) For operational readiness rotate the central switch clockwise to the position .

Shutting Down

The central switch is turned clockwise to the closed position . Close the quick release valve in the kitchen cupboard.

Frost Risk

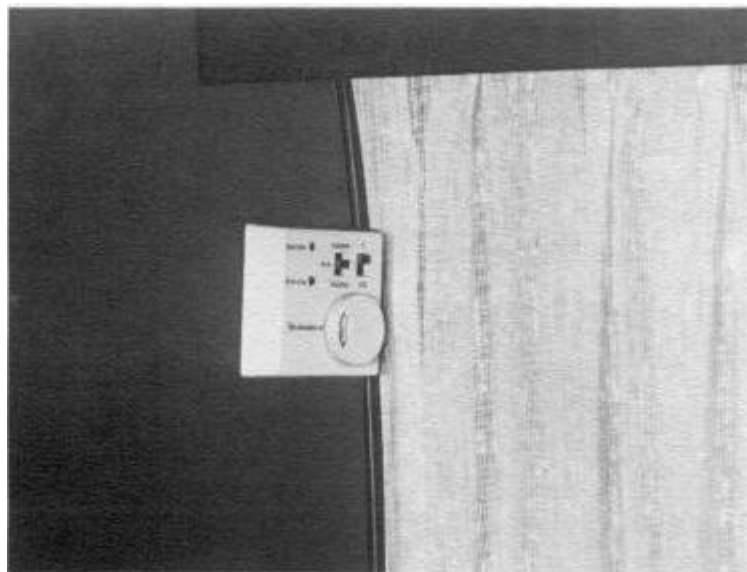
Special attention needs to be paid to equipment and lines that could possibly freeze in winter and these should be emptied following the notes in the installation and operation manual.

This applies in particular to the water heater, it must be completely empty to avoid frost damage. The manufacturer is not liable for frost damage. (See “Water Supply”).

When operating the heater, fridge and water heater on gas fire regulations must also be observed.

Heating

The heating is located in the rear seat bench. The built in fan distributes the warm air.



Thermostat-Switch For Heating

Switching on the heating

Open the quick release valve for the gas supply in the kitchen cupboard. Set the desired room temperature at the thermostat, set the switch to “Heizung” and set the switch next to this to the desired blower speed (“1” = full output. “1/2” = half output). The level of charge of the auxiliary battery is important for the correct functioning of the heating. Minimum voltage 10.3 Volts.

At low outside temperatures the heater should always be set to “1”. The green light shows normal operation. The red light can signal a fault. In this case refer to the Truma instruction manual.

A fuse for the current supply of the heating is located in the electric supply line in the seat bench (on the heater).

To turn off the heater set the switch to “auf”. Close the quick release valve in the kitchen cupboard. The blower continues to run!

In summer the blower can also be used for air circulation.

For this purpose set the switch to cooling mode and select the appropriate fan power (1 or ½).

It is important not to let snow walls or aprons build up around the vehicle in order to ensure the heater exhaust gases can escape.

The open space around the heater in the seat box should not be restricted otherwise good air circulation is not possible. The heating can be powered by propane, butane or a mixture of both. In winter however only pure propane should be used as below 0°C butane turns to liquid and is no longer a gas.

Gas Cooker

Switching on: Open the quick release valve on the left of the kitchen cupboard. Press in the cooker knob and turn to the left.

With the built in piezo ignition ignite the gas (turn red knob clockwise).

Hold down the knob some seconds more once the flame is visible (safety pilot). If the flame goes out when the knob is released, just repeat the steps above.

Switching off: Turn the cooker knob to 0. Close the quick release valve in the kitchen cupboard.

Fridge

The fridge has a volume of 45 litres and can be operated using 220 V, 12 V, and gas. 12 V operation is only possible when driving.

The absorber principle of the fridge ensures fault free operation only when the vehicle is parked flat, not on a slope.

Gas Operation: Open the quick release valve in the kitchen cupboard. Set the gas thermostat above the fridge door to the maximum power setting and press the red safety pilot knob for around 30 seconds. Now press the push button (ignition) several times. During ignition and in the following

15 seconds the safety pilot knob must remain pressed. The blue flame is visible with the fridge door open through the small hole in the lower right hand side. If the flame goes out repeat the steps above. After the fridge has cooled enough the gas thermostat switch can be turned to the desired temperature.

Switching Off: Just close the quick release valve in the kitchen cupboard.

Electric Operation: For electric operation switch the toggle switch between 220 V and 12 V (only when driving).

The temperature is regulated using the upper turn knob.

If fridge is not being used for a long period the fridge door should be left open.

Shower

The shower and wash basin are made from fibreglass with a gel coat finish. The good surface shine will only last if the surface is properly treated. To clean use only soap or a mild detergent solution.

Avoid contact with abrasive agents such as ATA, VIM etc.

Where the surface has small scratches or is dull a fine metal polish can be used to restore the shine.

Electrical Installation

The vehicle is fitted with a combined 12 / 220 V power supply.

In the seat bench a battery charger is installed with an electronically regulated 12 Volt output.

Via a switch on the control panel the output can be switched to either the starter battery or the auxiliary battery.

The 220 Volt supply is via a socket on the exterior side wall with 2 pole protection by means of a connecting cable (3 x 1.5mm²).

12 V Battery Operation: All 12 Volt equipment such as lights, water pump and heating are powered from the auxiliary battery in the seat bench.

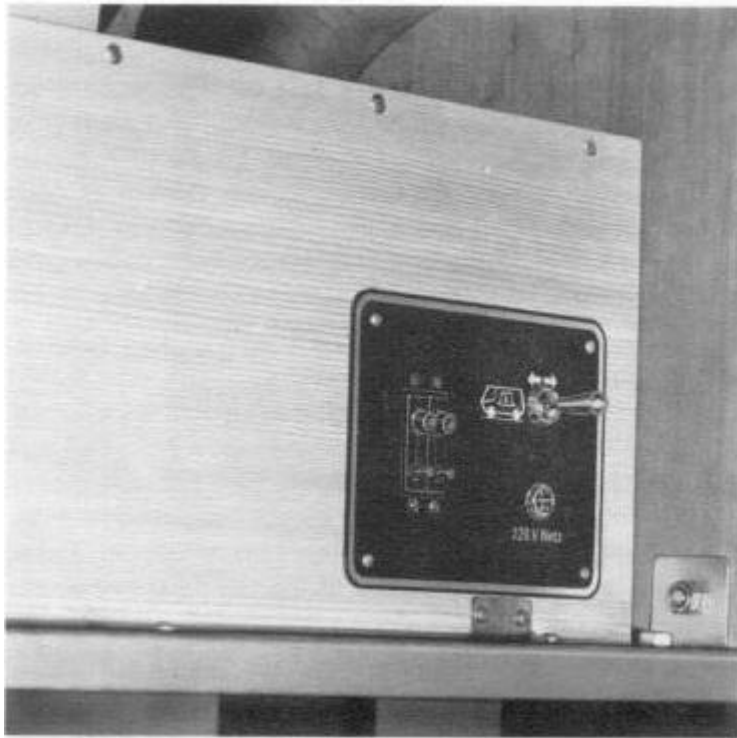
Attention: limited battery capacity.

220 V Mains Operation: Outlets and battery charger are supplied directly. The mains fuses (10 amp) that are located in the outer socket are accessible from the front inside the van.

All the 12 V living equipment is still fed by the second battery but depending on the position of the switch the power supply now backs up the battery.

This mode allows an almost unlimited operational time.

During driving the starter battery and auxiliary battery are charged from the alternator. The position of the toggle switch does not matter.



Control panel for battery charger at the bottom of wardrobe.

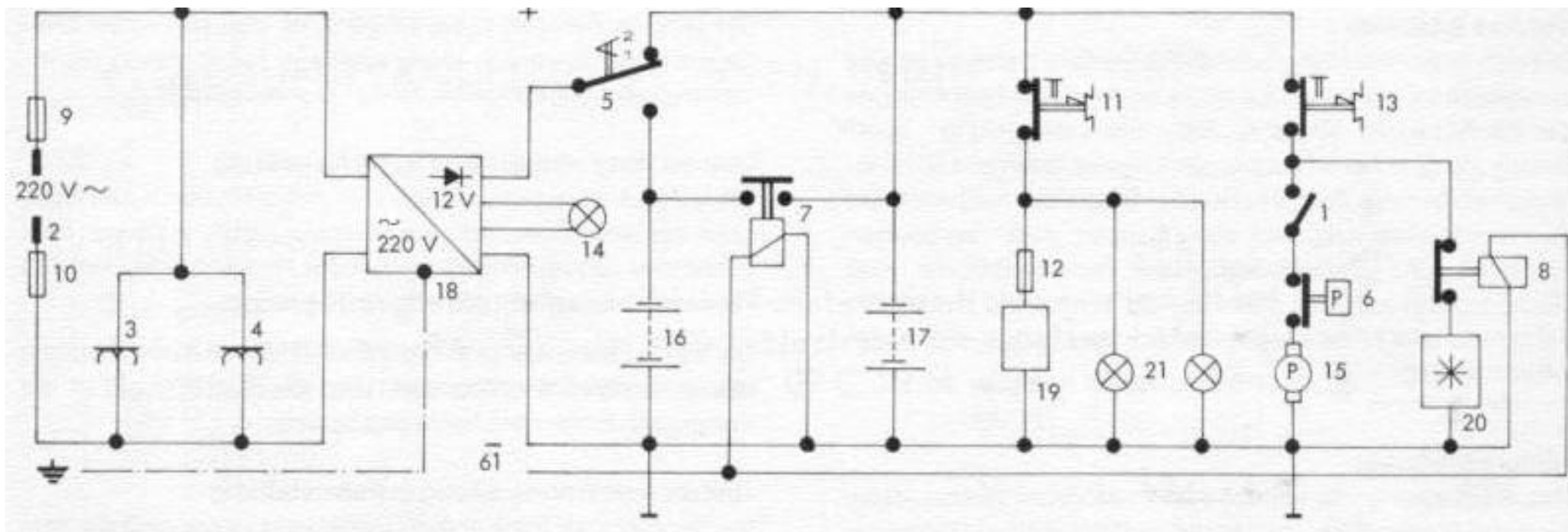
Control Panel

A green control light shows that the mains equipment is on.

The 12 V equipment is protected by the 10 amp circuit breaker.

By using the switch the output of the mains equipment can be directed to either the starter battery or auxiliary battery.

Overcharging of the battery is prevented by electronically regulated charging current.



- 1 Switch for water pump
- 2 Mains supply socket 220 V
- 3 Inner socket 220 V
- 4 Inner socket 220 V
- 5 Switch
- 6 Pump pressure switch
- 7 Charge relay alternator
- 8 Relay fridge
- 9 Supply fuse 10 A
- 10 Supply fuse 10 A
- 11 Automatic circuit breaker
- 12 Fuse heating
- 13 Automatic circuit breaker
- 14 Mains control light
- 15 Water pump
- 16 Starter battery
- 17 Auxillary batttery
- 18 Battery charger
- 19 Heating
- 20 Fridge

- 21 Inside lights, switch is integral to light unit



Terminal Strip Allocation

- Circuit II
- Circuit I
- Auxillary Battery
- Starter Battery

Reconstruction of seats into a bed

Front seat bank:

If the seat bank is in the living position pull the seat bank forward until it locks into position in the middle interlocking holes in the runner.

Unlock the seat cushion* by operation of the top black knob and half pressing down on the back rest. Now hold the seat cushion and fold the seat back up so that the lock disengages. Now pull down the seat and cushion. The back rest sets itself on the partition behind the drivers seat and forms the head of the bed with a nice slope.

* not all models

Rear Seat bank:

Lift the seat cushion slightly and pull forward. The seat back moves automatically into the bed position. The seat cushion falls into place.

Reconstruction of the bench into seating position

Front: Lift both seat cushions at the same time until the locks click into place and then push the seat cushion to bring the seat bench into the living position.

Rear: Push the seat cushion forward and fold over 90 degrees towards the rear until the locks click into place, push the high cushion down.

Double bed in the high top roof

The front bed part is fixed. Undo the locks on the flap, fold down and pull the extension out uniformly. Insert the cushions.

Seat Group / Double Bed

The front seat bank can be used in two positions: Facing the direction of travel (driving position) and against the direction of travel (living position).

Changing from driving position to living position:

To do this stand in front of the seat and reach through the gap in the seat cushion and pull forward towards yourself and it raises. And then by pushing the back rest down it is in the living position. Release the locks in the rails by lifting the black knob and slide the seat to the partition behind the drivers seat.

Changing from living position to driving position:

Unlock the seat bank in the rails and pull back until it locks in the rear interlocking holes in the runner.

Unlock the seat cushion* by operation of the top black knob and swing the seat cushion by pressing on the backrest.

?? not all models

Issue 10/78

Sven Hedin Manual

Fridge

To ensure fault free operation of the fridge at temperatures above 0°C the cover in the air inlet under the hot water heater should be removed. At temperatures below 0°C it should be reinstalled.

Washing Outside

To prevent damage to the decorative stripes we recommend that you do not wash vehicle in automatic car washes.

Fresh Water Tank

When filling the freshwater tank with a hose it must be ensured that enough air can escape from the filler neck.

WESTFALIA-WERKE

Translated into English by www.westfaliaLT.info – a useful website for VW Westfalia LT Camper enthusiasts.

www.westfaliaLT.info - a useful site for enthusiasts and owners of VW Westfalia LT campers